

KD-Validated Anti-MAPK6 Rabbit Monoclonal Antibody
Rabbit monoclonal antibody
Catalog # AGI2258**Specification****KD-Validated Anti-MAPK6 Rabbit Monoclonal Antibody - Product Information**

| | |
|-------------------|--|
| Application | WB |
| Primary Accession | Q16659 |
| Reactivity | Rat, Human, Mouse |
| Clonality | Monoclonal |
| Isotype | Rabbit IgG |
| Calculated MW | Predicted, 83 kDa; observed, 105 kDa KDa |
| Gene Name | MAPK6 |
| Aliases | MAPK6; Mitogen-Activated Protein Kinase 6; ERK3; HsT17250; P97MAPK; PRKM6; Extracellular Signal-Regulated Kinase 3; MAP Kinase 6; EC 2.7.11.24; P97-MAPK; MAPK 6; ERK-3; Extracellular Signal-Regulated Kinase, P97; Protein Kinase, Mitogen-Activated 5; Protein Kinase, Mitogen-Activated 6; MAP Kinase Isoform P97; EC 2.7.11 |
| Immunogen | A synthesized peptide derived from human MAPK6 |

KD-Validated Anti-MAPK6 Rabbit Monoclonal Antibody - Additional Information

| | |
|---|------|
| Gene ID | 5597 |
| Other Names | |
| Mitogen-activated protein kinase 6, MAP kinase 6, MAPK 6, 2.7.11.24, Extracellular signal-regulated kinase 3, ERK-3, MAP kinase isoform p97, p97-MAPK, MAPK6, ERK3, PRKM6 | |

KD-Validated Anti-MAPK6 Rabbit Monoclonal Antibody - Protein Information**Name** MAPK6**Synonyms** ERK3, PRKM6**Function**

Atypical MAPK protein. Phosphorylates microtubule-associated protein 2 (MAP2) and MAPKAPK5. The precise role of the complex formed with MAPKAPK5 is still unclear, but the complex follows a complex set of phosphorylation events: upon interaction with atypical MAPKAPK5, ERK3/MAPK6 is phosphorylated at Ser-189 and then mediates phosphorylation and activation of MAPKAPK5, which in turn phosphorylates ERK3/MAPK6. May promote entry in the cell cycle (By similarity).

Cellular Location

Cytoplasm. Nucleus. Note=Translocates to the cytoplasm following interaction with MAPKAPK5

Tissue Location

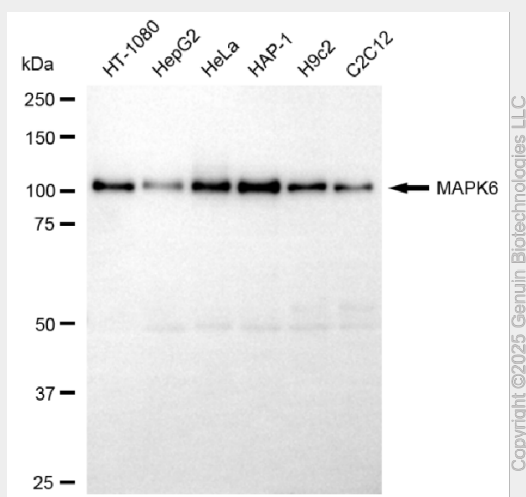
Highest expression in the skeletal muscle, followed by the brain. Also found in heart, placenta, lung, liver, pancreas, kidney and skin fibroblasts

KD-Validated Anti-MAPK6 Rabbit Monoclonal Antibody - Protocols

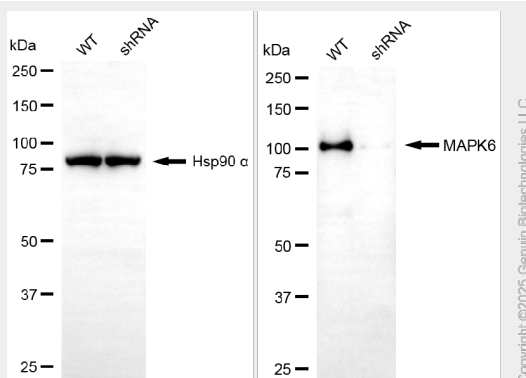
Provided below are standard protocols that you may find useful for product applications.

- [Western Blot](#)
- [Blocking Peptides](#)
- [Dot Blot](#)
- [Immunohistochemistry](#)
- [Immunofluorescence](#)
- [Immunoprecipitation](#)
- [Flow Cytometry](#)
- [Cell Culture](#)

KD-Validated Anti-MAPK6 Rabbit Monoclonal Antibody - Images



Western blotting analysis using anti-MAPK6 antibody (Cat#AGI2258). Total cell lysates (30 µg) from various cell lines were loaded and separated by SDS-PAGE. The blot was incubated with anti-MAPK6 antibody (Cat#AGI2258, 1:5,000) and HRP-conjugated goat anti-rabbit secondary antibody respectively.



Western blotting analysis using anti-MAPK6 antibody (Cat#AGI2258). MAPK6 expression in wild-type (WT) and MAPK6 shRNA knockdown (KD) HeLa cells with 20 µg of total cell lysates.

Hsp90 α serves as a loading control. The blot was incubated with anti-MAPK6 antibody (Cat#AGI2258, 1:5,000) and HRP-conjugated goat anti-rabbit secondary antibody respectively.